

Cippenham Table Tennis Club

Annual Report 2006-07

Highlights of the Year

This report summarises the thirty-fourth season in the history of Cippenham Table Tennis Club and the eleventh since the opening of our purpose-built premises. There were many highlights of the season of which the most important were:

- The ETTA Volunteer of the Year awards presented to Jan Chapman and Catherine Hayes;
- Gavin Evans' continued success in national and international competition and his many titles;
- Other international appearances and successes for Melanie Farquhar, David Hayes, Bradley Evans and Sarra Wang;
- Melanie Farquhar's Junior Girls' Singles title at the English National Junior Championships;
- the trio of second place finishes for the Club's teams in the Junior British League;
- the third place gained yet again by the Club's first team in Division One of the Senior British League;
- the much improved attendances at the Club's open practice sessions and the popularity of the Grand Prix series of events that has helped to achieve this;
- the massive entries received for the Young Players' Summer and New Year Festivals;
- the continuing use of Cippenham Table Tennis Centre by the ETTA for its prestigious events including the National Junior and Cadet Masters and the County Championships Senior and Junior Premier divisions;
- the hosting of all seven days' programme of the British League;
- the deserved praise given to the Club's catering at tournaments and other events;
- the new sponsorship agreement and supply arrangements with Bribar;
- the sustained financial result due to the enormous effort put in to the day to day running of the Club by its hard working volunteer management team.

Cippenham Table Tennis Centre



Cippenham Table Tennis Centre was opened on 1st October 1996 as a result of the hard work and enterprise of the Club's Management Committee. It is a joint project with The Westgate School and is used by the School during school hours for a variety of sporting activities. Outside of schools hours, in the evenings, weekends and holidays it is used exclusively by the Club for table tennis. The Centre is managed by Cippenham Table Tennis Centre Limited, a company formed by the management of the Club for the sole purpose of managing the facility.

The Board of Directors includes three Club members and a representative of the School staff.

The Centre comprises a playing hall (25m x 22m) with adjacent storage, plus an amenities area that includes a lounge area with servery, extended in 2004, and which has a full width, glazed screen providing views into the playing area. This facet of the design attracts many compliments from visitors. There is a spacious reception area and an office that doubles as a control point for tournaments. There is a disabled wash-room and changing and toilet facilities completed in 2004 as part of a substantial upgrade of facilities undertaken by the School. In the opinion of many the Centre is the finest table tennis facility in the country.

The Centre owns 18 usable Donic Waldner Sinus tables purchased over the past eight years. Nets, posts and scoring machines are routinely replaced to ensure that the Centre maintains a high quality standard of equipment. Twelve scoring machines have been refurbished with numbers produced on the Club's own laminating machine. This became necessary because of the poor quality experienced from the proprietary equivalents. There is also a robot machine purchased in 2002 to replace an earlier model. Since 2003 the Centre has benefited from 80 court surrounds in blue with the name of the Club imprinted in yellow. This has helped create a striking brand identity at the home venue. There are also about 90 quality spectator chairs.

The Club has developed a series of approved court configurations for use in competitive events. These cater for four Grade 2 courts, eight and nine courts of at least Grade 3 size and twelve courts for lesser events. The main criteria for selection of these configurations were implications for health and safety.

Administration

The Management Committee elected at the 2006 AGM met nine times. Constitution and personal attendances were as follows:

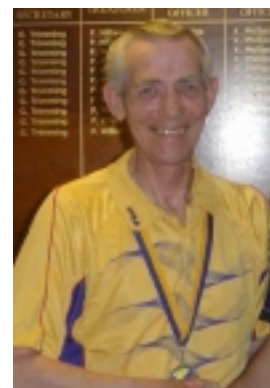
Name	Position	Meetings	Attendance	
Graham Trimming	Chairman/General Secretary	9	May 31	8
Peter Hillier	Treasurer/Bookings Officer	9	June 24	5
Sue Hayes	Deputy Chairman	6	July 24	6
Ken Phillips	Coaching Officer	3	September 10	8
Jacquie Lovell	Social Officer	9	October 29	8
Catherine Hayes	Events Officer	5	December 10	6
Terry Boxall	General Committee member	7	January 21	6
John Lloyd	General Committee member	7	March 11	8
			April 22	6

In addition Martin Adams was co-opted onto the Committee on September 10 but Ken Phillips resigned on July 28.

For the second year the Management Committee drew up an Organization Chart. This had two purposes: it formalised the structure of responsibility with Officers shown the scope of their departmental responsibilities and it identified gaps in the management hierarchy. Some gaps remain unfilled.

As a result the following additional appointments were made:

Development Coordinator:	Graham Trimming
Volunteer Champion:	Jacquie Lovell
Child Protection Coordinator:	Jacquie Lovell
Head Coach:	Ken Phillips
Committee Secretary:	Jacquie Lovell
Membership Secretary:	Graham Trimming
PremierClub Contact:	Graham Trimming
Press Secretary:	Graham Trimming
Newsletter Editor:	Graham Trimming
Webmaster:	Graham Trimming
Supply Players' Agent:	Roy Linz
Marketing Coordinator:	Martin Adams
Calendar Coordinator:	Sue Hayes
Weekend Set-up Coordinator:	Jim Hayes
Weekday Duty Manager:	Jacquie Lovell
Catering Manager:	Jacquie Lovell
Westgate School Liaison:	Jacquie Lovell and Ken Phillips (resigned)
Health and Safety Advisor:	Jacquie Lovell
Maintenance Manager:	Terry Boxall
Equipment Manager:	Ken Phillips
Supply Club Agent:	Peter Hillier
Auditor:	Filippo Rotunno.



Also, secretaries and captains were appointed for all teams and organizers and referees appointed for all major events.

In addition the following sub-committees were elected:

Karen Mitchell Memorial Fund:	Jacquie Lovell; Charles Mitchell; Frankie Butterworth
British League Ranking:	Sue Hayes; Paul Baker; Martin Adams; Mark Jackson
Slough League Selection:	John Lloyd; Sue Hayes; Graham Trimming
Calendar:	Sue Hayes; Catherine Hayes; Peter Hillier; Ken Phillips; Graham Trimming.

Necessarily, all the Committee members do far more than might be supposed from their job titles. Thanks are due to all who have contributed to the administration of the Club, including all the team captains.

For the second year there was only one Cippenham member who held office for the Slough League, Graham Trimming who completed his 32nd year as Fixtures Secretary. Jan Chapman continued as Chairman of the Maidenhead Association while Nick Hansell maintained his Treasurer's function for the Bucks County Association. Graham Trimming also continued as Auditor of the Maidenhead Association.

Paul Baker is the full time Facilities Officer for the ETTA while Roy Linz work hard on behalf of the Southern Region Training Squad.

Development

A lot of effort was put into a short-term action plan during the previous season 2005-6 so this season the emphasis has been to build upon that. Much of the effort has been focussed on providing the core local membership of the Club with an enhanced experience. The most visible of these initiatives has been the Grand Prix series of events played on weekday evenings during practice sessions. This was followed up by the re-appearance of the Club Championships, played in a similar less formal environment, during April and May. A significant number of enquiries have been received for adult coaching and a six-week course is planned for this summer. Attendances have improved significantly as a result of these initiatives with practice fee income up over 60% on the previous year. One of the objectives of the work put in on core membership value has been to provide more players for the Slough League teams. It was pleasing that eight players new to the Slough League appeared regularly in the Club's teams during the season.

Work has also taken place behind the scenes on better marketing of the Club and Martin Adams was co-opted onto the Management Committee as Marketing Co-ordinator. We expect to see the results of some of his work over the next year or so.

Latterly, attention has turned to training of officials and the Club has scheduled a Tournament Organizers' course, for an accredited ETTA designation, on 14 July. This qualification is a required step towards the Tournament Referee qualification and one of the Club's objectives is to have more of its members qualified in this aspect of table tennis administration. The Club is also keen to recruit and train more coaches and there may be a need to "convert" old qualifications to new qualifications as the system is currently undergoing change.

Volunteer Investment

The Club has, for several years now, placed great emphasis on volunteer investment management – the recruitment, retention and reward of the Club's volunteer work force. Although there are never enough people to do all the things we would like to do the Club does have a more able, better focussed and more highly motivated volunteer force than most other organizations of its type. This is recognized by the ETTA which continues to place faith in the Club to host events on its behalf.

Jacquie Lovell is the Club's Volunteer Champion and it is her dedication in this and her many other tasks, leading by superb example, that keeps many others engaged in their work load, giving up their time to the benefit of the Club willingly and enthusiastically. The wine that is sometimes on offer in the servery at weekend events helps a little too! Jacquie organizes training for those who need it and maintains the valuable Volunteer Reference Manual with its collection of written resource materials.

Critical to the success of volunteer management is reward. The volunteer has to feel that he or she has made a worthwhile contribution and gain satisfaction from having assisted the Club. Ever since 1997 the Club has presented the Outstanding Contribution Award at its annual Anniversary Party. The 2006 award was made to Gill Tucker for the many hours she has spent over quite a few years assisting Jacquie and the rest of the team in the servery at weekends. Opportunity is also taken at the party to recognise in a smaller way many other members for their continued loyal support to the Club. Since 2003 the Club has also made awards to players and in 2006 the Senior Player of the Year award went to Martin Adams and the counterpart Junior Player of the Year award to Lindsey Armstrong.



Jacquie, herself, was a surprised recipient award at the same function. Club Chairman Graham Trimming presented the coveted ETTA Maurice Goldstein Merit Award for service to table tennis. A pre-requisite for this award is ten years of outstanding service and so it was fitting that the award was made at a party to celebrate the tenth anniversary of the opening of Cippenham Table Tennis Centre. Jacquie has been the Club's Social Officer for each of those ten years.

Since February 2003 the Centre has employed a paid Duty Officer to be present on Tuesday and Thursday evenings. The summer duties were shared by Gemma Chapman and Tom Mitchell, both returning after previous stints, while Catherine Hayes took over in September and has performed her duties with distinction ever since.

Much of the work that is necessary to run a club with such high activity levels goes unseen by the general membership and some of it is far from glamorous. A good example is setting up for weekend events. Many Friday evenings see a team of people at the Centre moving tables, chairs and screens into position so that a perfect arena awaits the first participants on a Saturday or Sunday morning. The Club is grateful to Jim Hayes who has undertaken the management of this for the past eighteen months. Unfortunately, Jim's requests for ordinary members of the Club to put themselves forward for a roster to help in this respect have gone largely unanswered and so much of the burden remains shared by himself and his already hard-working family. Another aspect that goes largely unnoticed is maintenance. Terry Boxall and Alan Farral

undertake much of this work and use their many skills for the benefit of the club. They have also run our Thursday coaching sessions for many years and we owe them a great deal of thanks.

Roy Linz is another member who quietly gets on with tasks in the background including processing and dealing with Bribar orders, regularly helping at coaching sessions and often stepping in to the breach as Duty Officer. For the first time this year Chris Tucker has also taken on the role of National Junior League Administrator and acquitted himself admirably. Malcolm Makarian is also invaluable, ever willing to help at tournaments, tidying up, umpiring and providing a practice partner for visitors.

The Club would like to place on record its grateful thanks to the many people that assist in a great variety of ways. The Management Committee members all work very hard but are assisted by a great many more in such tasks as catering, captaining of teams, coaching, umpiring, chauffeuring youngsters, setting up for weekend events, general maintenance, etc. Not all of our valuable volunteers are even members of the Club, some are parents. Particular thanks are also due to Mick Strode who acts as referee for some of the events held at Cippenham.

Accreditation

For some years now the Club has been seeking accreditation by entering itself and its players and volunteers for awards and has been very successful in gaining recognition in this way on a number of occasions. The summer of 2006 provided the best possible reward with the Club scooping both of the national volunteer of the year awards. Jan Chapman was presented with the ETTA's Senior Volunteer of the Year award for her unstinting dedication to table tennis that takes in a huge



amount of coaching on behalf of the Club, junior team captaincy and her many years as Chairman and guiding influence of the Maidenhead Association. The double was achieved when Catherine Hayes received the ETTA Junior Volunteer of the Year. At the age of sixteen Catherine had already completed two years as the Club's Events Officer, delivering the busy tournament programme that exists at the Club at weekends, and is now also the Club's Duty Officer on Tuesday and Thursday evenings.



When a development plan was written in 2004-5 the chosen mission statement was "to be the pre-eminent table tennis club in England". Pre-eminence suggests an important "presence" in national table tennis activities. An unofficial ranking of clubs in the British leagues, based on a statistical analysis carried out by the Club, places Cippenham third overall out of about 110.

The ETTA itself is seeking accreditation for clubs through its *PremierClub* scheme and has issued all *PremierClubs* with a record of achievement file that will be populated with documentation and used to gain Sport England Clubmark accreditation. Paul Baker has recently reviewed the file and it is hoped that it will soon be ready for initial presentation to the ETTA.

Membership

The current official membership of the Club stands at 170, the same number as at the same stage of last year. The final figure for the year ended 31 August 2006 was 179, 16 down on the previous year. To put this into context, the total membership in 1996 prior to the move into our purpose-built centre was 60. Some of the members are non-playing, having joined through the Club's family membership scheme, but nevertheless this must make the Club one of the largest in the country.

Members are only permitted to use the Centre when it is officially open. The only exceptions to this are key-holding Privileged Members. These are Management Committee members who have been in office for at least one year and a few others who have been rewarded for their outstanding contributions. In 1999 the Club introduced another tier, the Gold Privileged Member. To qualify for this, members must have given outstanding service to the Club over a period of at least two years and the benefits include not having to pay any fees for matches, coaching and practice.

Over the past twelve months a total of 76 players have represented the club in match play, 2 more than in the previous year. 23 of these made their debuts for Cippenham during the year compared to 17 the previous year. 21 teams were entered into various leagues during the past season, the same as in the previous season. Nine teams were entered into British leagues, seven in the National Junior League and five in the Slough League. It was pleasing to add an additional team into the Slough League but the number of teams is still very low compared to the overall membership of the Club. It appears that even a club with the size of membership and success rate of Cippenham is finding it difficult to enthuse players of the virtues of local league table tennis, which for more than seventy years has been the core competitive product offered by the sport.

The Club is now 34 years old and during that time a total of 654 players have played in our teams. The Club's Founder, Graham Trimming, is easily the player with the most appearances for the Club and made his 1,400th appearance during the season while another old stager, Peter Hillier, is on his own in second place with more than 800. Sue Hayes became the thirtieth player to reach 200 appearances during the season while Tim Kiteley became the latest player to reach the century. The all time leading appearance list now reads:

Graham Trimming	1417	David Hayes	329	Gemma Chapman	272
Peter Hillier	809	Rodney Potts	316	Steve Crow	268
Frank Earis	669	Georgia Veneer	312	Robert Hansell	259
Mike Rhodes	579	Paul Baker	303	Roland Clapton	257
Ken Phillips	549	Alec Watson	301	Jane Dickens	235
Jackie Wood	403	Armando Borges	289	Sue Hayes	209
Gareth Lovell	381	Jacquie Lovell	282	James Milton	205
Neil Bird	374	Wendy Barlow	279	Anna Watton	204
George Appleby	372	Steve Joel	278	Andrew Dickens	203
Frank Cowley	363	Dave Pountney	276	Steve Dorrell	202

The busiest players during the year were Peter Gajdus (33), Ollie Valdez (30) and Graham Trimming (29).

One of the nicest developments at the Club during the time since the opening of our Centre has been the involvement of whole families with the youngsters playing while their parents assist in the administration, coaching or general well-being of the Club. Of special note in this context are the Chapman, Hansell, Harper, Hayes, Lemon, Linz, Mitchell, Polding, Shaw and Tucker families.

Finance

Two years ago the Club was faced with a situation in which it had made a financial loss for two years running. The fact that this came after several years of healthy surpluses meant that the Club still had substantial funds at its disposal but, nevertheless, steps needed to be taken to arrest the downward trend. Several measures were put into place in the summer of 2005 to achieve this and the year 2005-6 produced an operating surplus (i.e. before adding in interest income) of £1,900. Further progress has been made this year with another operating surplus of £2,160 and a total surplus of £3,489 when taking the accounts of the Club and Cippenham Table Tennis Centre Limited together.

At the end of the financial year in April, cash balances stood at about £42,000 and net assets nearly £63,000. That is good in anybody's terms. These balances and renewed confidence in the operating results of the Club means that, should another worthwhile project be identified, funds could be made available for capital expenditure.

No new increases in fees were introduced this season and none are proposed for next season except that the rate at which we hire our premises to third parties is set to rise from £18 to £20 per hour. Annual membership fees remained £15, practice and match fees £3.50 and coaching fees £5. All these are halved for juniors and over-60s. Practice fees for non-members carry a £1.50 (75p) surcharge. A special Family Membership fee of £25.00 is available to any number of related persons residing at the same address. Players in the National Junior League continued to pay a £12 fee to part cover the season's expenses and for the second year players in the British leagues were asked to contribute the cost of their individual registration fees with the Club continuing to bear the remainder of the cost.

The season just finished was the first year in a new cycle of players' kit for the British leagues. Previously this has cost the Club in excess of £3,000 but due to the sponsorship arrangements negotiated with new suppliers Bribar this cost was capped at £1,300. However, this still represented an increase of nearly £1,200 over the previous season. Travel and accommodation costs for teams in the British league also increased by £1,000 and with maintenance to the building costing £1,000 more than the previous year, our cost base rose by nearly £4,000. We were fortunate that, due to the efforts of Jacquie Lovell, the cost of cleaning the premises fell by about the same amount and neutralised the effect of the cost increases borne.

The fact that the results of the last two years have been broadly similar hides the fact that there were also other factors offsetting one another. An increase in participation on Tuesday and Thursday evenings brought in over £1,500 while a decline in participation in coaching cost the Club £1,000. Letting income was up £400 but income from catering was down £1,000 mainly as a result of events such as the National Masters falling into different financial periods.

A structured approach to reimbursing expenses for teams in the British leagues continued this season. This is available for all teams playing away from Cippenham.

The Club maintained the Karen Mitchell Memorial Fund in recognition of our friend who passed away in 2000. The Fund was started with a very generous donation from Charles Mitchell and is being topped up by a contribution of 5% of the entry fees of all junior and younger open tournaments run by the Club. The aim of the Fund is to provide financial assistance for children's activities and that includes support for children who may, for one reason or another, need help with expenses incurred in the pursuit of table tennis. The current value of the Fund is separately disclosed in the accounts.

Public Relations

Although the Club has not been able to find an appointee for the position of Public Relations Officer, a significant amount of work has, nevertheless, been undertaken, and mostly by Graham Trimming. The Club's activities and successes have continued to be reported well in the three local newspapers: Express, Observer and Maidenhead Advertiser. 27 reports have been submitted during the year and these reports have covered 29 stories. These achieved over 500 column inches together with 20 photographs, although the coverage achieved was down on the year before when 38 reports were submitted on 58 stories. Reports of the Club's open tournaments have also appeared in "Table Tennis News", on the ETTA web site and in the VETTS Newsletter. An edition of the Club Newsletter has also been published eleven times during the past year. These provide the reader with reports of events that have happened and news about events yet to occur. These and the notice boards at the Centre are an important source of information for everyone. A Membership Pack was introduced six years ago and this, updated when necessary by Jacquie Lovell, has proved to be a useful document to give to potential members on the occasion of their first visit.

The Club also has its own web site (www.cippenhamttc.co.uk). This has been designed, written and is maintained up to date also by Graham. A full range of information is available and the site is a valuable vehicle for members' information, introductions to the Club for outsiders, results of Club events as well as providing an opportunity to download colour copies of the Club's monthly Newsletter and entry forms for forthcoming tournaments. The Club almost certainly owns the most extensive and regularly updated club table tennis web site in the country.



The Club entered into a new supply agreement and sponsorship with Bribar for kit and equipment in 2006. This followed a ten-year association with Jarvis Sports. Five companies, including Jarvis, were invited to tender and it was Bribar that offered the best deal. We have since enjoyed a good working relationship with Bribar, mainly in the form of Barry and Sue Chapman, and have welcomed their stalls at a number of our events. A striking combination of yellow shirt, blue shorts and blue tracksuit was chosen as the Club's kit and this was supplied at the Club's expense to members of the teams in the British leagues and to some of the coaching staff. These kits carry the Club's professionally designed logo on the back of the shirt and tracksuit and are therefore an important part in the establishment of the Club's corporate identity. Some Club members have taken advantage of the special terms arranged with Bribar for the supply of Club kit and playing equipment.

The Club is thankful to Roy Linz who has managed the service to members and to Peter Hillier who has acted as agent for the Club's own requirements.

Martin Adams joined the Management Committee last summer and was appointed as the Marketing Co-ordinator. He has started to manage the relationship with Bribar, taking over aspects of this from Jacquie Lovell, and he has also worked on other principles of marketing, especially signage and collateral printing. Martin has designed posters for events around the Club but the necessary provision of roadside signage has hit a financial obstacle. In January Martin undertook most of the work of preparing the Club's application to host training camps leading up to the London 2012 Olympics. Further planned projects include the centralization of the Club's marketing databases.

Social Activities and Amenities

One of the best features of the design of the Centre is the lounge and refreshment area with its viewing aspect into the playing hall. This area and the servery cope well with the demands placed upon them to feed 100 or so competitors plus their coaches and parents, especially since the area was extended in 2004. The success of the Club's catering is due totally to the skill and hard work of the Club's Social Officer Jacquie Lovell and her staff, especially Jan Chapman, Gloria Shaw, Gill Tucker, Frankie Butterworth, Susana Hansell, Geraldine Linz, Fen Fen Oetiker, Maggie Lemon, Terry Boxall, Alan Farral, Sue Hayes, Catherine Hayes, Hayley Polding, Stephanie and Ed Mitchell. Many others, including several other parents, have also given assistance.

The lounge has become a magnet for players at events while they are not actually playing. Many members and visitors prefer to sit inside the lounge area where they can eat, drink and talk rather than stay in the playing arena. The television and VCR are also popular attractions. For the very young there is also a range of toys and this sometimes results in the lounge appearing more like a crèche. With the large-scale emergence of mobile telephones, the pay telephone in the lounge enjoyed little outward activity and was therefore replaced in 2005 by the Club's own mobile.

The tenth annual party was arranged in the lounge to celebrate the anniversary of the opening of the Centre and this was well attended by members and their families. The Christmas party, after a year's absence when it was replaced with another event, was re-established and well attended.

Venue Utilisation

Since the opening of Cippenham Table Tennis Centre two principles of utilisation have been established: weekdays should be for regular events, and weekends should be filled on an ad hoc basis with no regular weekly events impeding this. For most of the year the weekday format has been:

Monday	7.00 to 9.30 pm	Advanced coaching group
Tuesday	7.15 to 11.00 pm	Local league matches
	7.30 to 11.00 pm	General practice
Wednesday	7.30 to 9.30 pm	Squad coaching
Thursday	5.15 to 7.15 pm	Beginners' coaching
	7.15 to 11.00 pm	Local league matches
	7.30 to 11.00 pm	General practice

The Grand Prix is now a popular event during the week and has been played on both Tuesday and Thursday evenings. In addition, the Club Championships used some of the hall for six Tuesday and Thursday evenings in April and May.

Privileged Members are allowed to play when the Centre is not in use for other activities. Many weekend dates have been sold to outside events, detailed later in this report, or used for tournaments organised by the Club.

On each occasion that the Centre is open a Duty Officer is nominated. The responsibilities of the Duty Officer include the collection of fees, health and safety, the proper use and storage of the Club's equipment together with the security of the Centre. Before each weekend event the venue needs to be set-up, often on a Friday evening. The Club is indebted to Jim Hayes manages plus Sue and Catherine Hayes, Ken Phillips, Peter Hillier, Graham Trimming, Terry Boxall, Peter Gajdus and Ollie Valdez who have assisted with this activity.

Outside Events

The Club continues to be very successful at marketing the Centre for outside events. Extensive use has been made by the ETTA, ETTA Southern Region, Buckinghamshire County Association and the Maidenhead and Reading Leagues. This year saw the re-emergence, after a one-year gap, of the Bucks Association using the venue for sessions in the County Championships.

The ETTA events included the National Junior and Cadet Masters for the eleventh time and the Premier Division of the Junior County Championships for the seventh time. In addition the Premier Division of the Senior County Championships was hosted for the fifth time. For the Masters and the Junior Premier the venue is given free of charge to the national association, i.e. six days in total. Apart from the provision of a venue and the effort involved in setting this up, there is also a great deal of organizational and catering work involved on these occasions and the Club is especially indebted to Ken Phillips, Jacquie Lovell and their teams for their involvement in this.

The Club also hosted all four weekends of the British League Division 1 South and Division 1 South and Midlands. These were organized by Graham Trimming while Ken Phillips acted as Referee. As has been the case since its inception, the Club, acting in conjunction with Mike Atkinson and Chesham High School, hosted the four days of the National Junior League with, this year, Sue Hayes and Chris Tucker doing the organization and administration.

A full list of outside events, totalling 44 days, was as follows:

ETTA:	National Junior Masters (2 days)
	National Cadet Masters (2)
	County Championships Senior Premier Division (2)
	County Championships Junior Premier Division (2)
	British League (7)
	National Junior League (4)
ETTA Southern Region:	Junior/Cadet Trials (2)
	Junior Training/Assessment (9)
Bucks County TTA:	County Championships sessions (4)
	Junior/Cadet Trials
	Bucks Junior Closed
Maidenhead & DTTA:	Maidenhead Closed Championships (2)
Reading League:	Reading Closed Championships (2)
Gareth Herbert:	Weekend coaching sessions (4)

Club Events

Open Tournaments

Nine open tournaments were staged by the Club at the Centre:

Date	Event	Organizer	Referee	Entries
Jun 06	Young Players' Summer Festival	Ken Phillips	Ken Phillips	350 approx
Jul 06	Veterans' Summer 2-Star	Graham Trimming	Peter Hillier	50
Sep 06	Senior 2-Star	Paul Baker	Peter Hillier	80
Nov 06	Junior 2-Star	Terry Boxall	Peter Hillier	83
Jan 07	Young Players' New Year Festival	Ken Phillips	Ken Phillips	320
Feb 07	Team 2-Star	Graham Trimming	Graham Trimming	16 prs
Mar 07	Cadet/Under-13 2-Star	Sue Hayes	Mick Strode	51
Mar 07	Veterans' 2-Star	Graham Trimming	Peter Hillier	55
Apr 07	Double Group 2-Star	Terry Boxall	Peter Hillier	25

These nine events represent one less than in 2005-6 when two Banded Opens were run because of the vagaries of the calendar. However, this season the Banded Open was dropped in favour of a Team Open. This was played between teams of two players on a progressive knock-out basis, i.e. all teams and players were engaged for the full day's play and everyone got good value. The entry was only 16 teams against a maximum possible of 24 but the feedback at the end was extremely positive.

For some of the other events, particularly the Cadet/Under-13 and Double Group Opens the numbers of entries were disappointing but in the case of the latter it may have been partly as a result of the lateness of the distribution of entry forms. No such worries surrounded the two festivals, one in the summer and one just after Christmas. The usual five age groups were reduced to four for the New Year festival with no loss of entries and a schedule that was easier to manage. While the majority of our events run on eight (sometimes nine) tables, the festivals take seventeen with the last five being accommodated in the school gymnasium. These festivals are brilliantly successful, attract huge entries and make a meaningful contribution to the Club's financial result.



The Centre lends itself very well to tournaments of the kind usually run - singles only in groups of at least four with the top two (or three in some cases when larger groups can be accommodated) in each group going forward into the championship, while the remainder go into a consolation event.

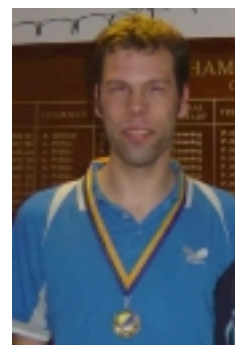
As the standard goes up then so the chances of local success goes down. Thank goodness then for Edward Mitchell as it was his three victories in the Summer Festival (under-13), New Year Festival (under-14) and Cadet/U13 (under-13) events that kept the Club's players in the headlines. Rachel Farquhar also won the Under-14 event at the Summer Festival.

Many thanks are due to the organizers, their unsung helpers and referees. It is a testament to their abilities that so many pleasant messages are received from happy participants at the end of the day's play.

Club Championships

The Club Championships made a welcome return this year, albeit in a slightly less formal way, and staged on six weekday evenings in April and May during the Club's usual open practice sessions. Eight events were planned although the Cadet Singles and Drawn Doubles did not receive enough entries to go ahead. The senior events were reasonably successful but the junior events were not, probably as a result of being played at a time when juniors are not usually present but adults are.

Eric Van Looy became the Club's Open Singles champion, while Graham Trimming took the Veterans' Singles and the Open Doubles with Tim Kiteley, Peter Gajdus the Junior Singles, Avijit Kelkar the Tweenie Singles and Michael Bennett and Andrew Young the Junior Doubles.



Grand Prix

The Grand Prix was one of the most successful initiatives staged by the Club in the last twelve months. Starting in Summer 2006 as a six-week trial there have now been six such series and the usual attendance is about a dozen players. The Grand Prix has succeeded on many fronts. It has pepped up practice sessions and given them a structure for those players who wish that rather than to play on an ad hoc basis. It has also made it much easier for new members to integrate and has introduced new players to competitive table tennis in readiness for possible involvement in the local leagues.

Peter Gajdus was the only player to win the Grand Prix twice, the others having been won by Tim Kiteley, Eric Van Looy, Alan Farral and Paul Baker.

Team Competitions

The Club has had another successful season in league competitions. Congratulations are due to all the players and organizers who have contributed to this success that continues to secure Cippenham's position as one of the major forces in English table tennis.

British League Competitions

Nine teams were run in the British league competitions, one down on the previous season caused by dropping one of the two boys' teams in the Junior British League

The Senior British League was slightly restructured this season with three Division Ones feeding into the Premier Division. The result was that the Cippenham second team were placed in Division One South and Midlands at the same level as the first team who operated in Division One South. The third team also benefited from promotion to Division Three South in the re-shuffle.

The first team finished third for the fourth time in the last six seasons. The other two seasons have produced fourth-placed finishes and this shows a remarkable consistency in the performance standard of the team. Martin Adams, the only player to have played more than 100 matches for Cippenham in the British League, again headed the team with great personal consistency and finished with a win record of nearly 80%. The second team struggled to find a strong enough fourth player on occasions but still managed to survive the drop zone by as many as seven points. The third team failed to find a fourth player altogether for the final weekend's matches and slipped down into fifth position in their division.

Paul Baker acted as overall Captain and Secretary and the individual teams were captained by Martin Adams, Mark Jackson and Phil Clarkson.

For the second season running Abigail Embling was unavailable for the second weekend of the Women's British League and with Lesley Keast also struggling with her fitness, the Premier Division team fell into the relegation zone, despite the best endeavours of Sarra Wang who deputised for Abigail. A similar fifth place was the only reward the second team could obtain from their endeavours in Division 3. Jan Chapman and Sue Hayes acted as the Captains and Secretaries of the two teams.



The girls' first team in the Premier Division of the Junior British League were another to lose a star player for the second weekend when Sarra Wang, signed at the start of the season, became unavailable. However, this probably did not affect the finishing position as Cippenham maintained second position thanks mainly to the average topping exploits of Melanie Farquhar who finished with 95%. Second place was the order of the day for the Junior British League teams. The boys' team secured that spot in Division 2B while the second girls' team enjoyed a remarkable second weekend to climb from fifth to second position in Division 2, despite losing Rachel Pilgrim to

the first team in substitution for Sarra. Ken Phillips acted as Secretary for all the teams and he, Jan Chapman and Sue Hayes acted as Captains.

Veterans' British League stalwart Paul Baker missed the entire playing season after suffering a horrific injury in a freak holiday accident in the spring of 2006. Roger Hookey and Charlie Childs were signed to team up with Mike Rhodes and the whole team performed better than their rankings would suggest, finishing fourth and maintaining the Club's status in Division 2. Roger, especially, enjoyed results that belied his ranking. Mike Rhodes acted as Captain and Graham Trimming Secretary.

Other National Competitions

The national team knock-out competitions were not staged by the ETTA this season and it appears that the Ormesby (men) and Gainsford (women) Cups will not be again in the future. If this is so, then Cippenham will have been the last ever winners of the Gainsford Cup and winners in four of its last five seasons and winners also of the penultimate Ormesby Cup.

Six boys' and one girls' teams were entered into the National Junior League, played at Cippenham and Chesham High School. The top boys' team finished fifth in Division 1 while the girls occupied the same position in their division. This league is an introductory league for aspiring young players but unfortunately the teams played short on some occasions because of lack of players. These teams were managed by Ken Phillips.

Local leagues

The Club's run of Slough League titles has ended on unlucky thirteen. This season the Club did not have the required standard of playing resources to mount a serious challenge to Chalfont Argonauts although our top two teams, Outlaws and Buccaneers, did still manage to finish in second and third positions. Three teams were entered into Division Two and Rascals were the most successful, finishing runners-up but losing out emphatically to Burnham Leopards in the promotion and relegation play-off. John Lloyd took on the mantle of overall Slough League Captain and the individual team captains were Sue Hayes, Tim Kiteley, Amar Abid-Ali, Graham Young and Ray Burbidge. Scoundrels, in the form of Vibhash Mishra, Ray Burbidge, Georgia Veneer and Tariq Kashmiri, nearly had a moment of limelight but after qualifying for the final of the Division 2 Handicap final they succumbed to George Green Gremlins 6-4.

Coaching

Coaching of young players is probably the most important work that is undertaken by the Club. The coaching scheme has been established for many years and has been very successful for a long time. It continues to be one of the most successful coaching set-ups in the country ably managed by Ken Phillips and the other coaches. The Club is fortunate to have such dedicated and highly qualified staff with Ken and Sue Hayes having both received ETTA Coach of the Year awards in the last few seasons.

Many of the players attracted to the Club come from other coaching classes run by Ken and an informal cluster exists comprising: Farnham Common Middle School; Burford School, Marlow Bottom; Oldfield Junior School, Maidenhead; Arbour Vale School, Slough; and the Westgate and Cippenham Junior Schools Cluster. The Club also attracts youngsters from many miles away who want to take advantage of the high standard of coaching and development management available at the Club. Arbour Vale School is a school for pupils with special needs and provides a source of great inspiration for Ken Phillips and Jan Chapman who enjoy the weekly challenge of teaching these youngsters.

There have been three weekly coaching sessions this year. On Thursday early evenings there are beginners' classes run by Alan Farral with help from Terry Boxall while on Monday there are classes for more advanced performers run by Ken Phillips with help from a number of other coaches and feeders. The other regular weekly session takes place on Wednesday evenings. This is for a squad of invited players and is now under Sue Hayes' management.

The Club's coaches also travel with the juniors many weekends to open and national events up and down the country. The children benefit greatly from these experiences and gain from them the ranking points that are the main object of desire for many of them. Some coaches also provide one-to-one coaching at the Club during other times and this specialist coaching has been one of the reasons why so many of our juniors have gone on to national and international success over the years.



The coaches currently working at the Club are: Terry Boxall (Level 3); Jan Chapman (Level 2); Alan Farral (Level 3); Sue Hayes (Level 4); Muriel Hooker; Tim Kiteley (student coach); Malcolm Makarian (Level 3), Roy Linz (Level 2), John Lloyd (Level 2) and Ken Phillips (Level 4). The Club is indebted to them for their hard work that involves many hours each week.

Alan Farral presented some coaching awards around Christmas time. Angela Oetiker was given the "Top Dog" award while Tina Winn received the Beginner of the Year award.

Tournament Success for Individuals

This has been another remarkable year for the Club's members. A list of their achievements can be found in the appendix and as usual it is the Club's younger players who have achieved most success.

Gavin Evans is, of course, and has been for many years, the Club's top performer. Gavin is in a class of his own for his age, possibly the best ever, and almost certainly the best in Europe currently. His list of titles is amazing. During the past year he has won international Cadet Singles events in Canada, Spain and Slovakia, won the English National Cadet Boys' Singles title and the Masters as well as the Under-13 and Under-14 titles at the English National Under-11/12/13/14 Championships, an event in which he has won so much over the past few years that he has set records unlikely ever to be matched. Gavin also reached the semi-final of the Men's Singles at the English Senior National Championships.



Gavin's older brother Bradley has also tasted success in international competition. He won the Junior Boys' Singles at the Six Nation Junior and Cadet Championships and also shared in a team gold for England. Sarra Wang did likewise in the girls' team event.

Melanie Farquhar and Edward Mitchell also won national titles. Mel followed up her great form in the Junior British

League by winning the Girls' Singles title at the English National Junior Championships and Edward was successful in the summer of 2006 in the Under-12 Boys' Doubles at the English National Under-11/12/13/14 Championships. Mel's younger sister, Rachel, also had her moment of glory when winning the under-15 event at the National Trials.

Other Club members, including Reena Ardesana, Abigail Embling, Myles Evans and Matt Ware, also won events on the ETTA Grand Prix tour and these results can be found in the Appendix.

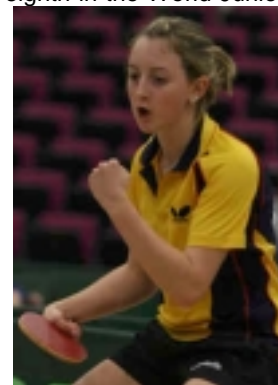
Representative Honours and Rankings

Gavin and Bradley Evans became the latest Cippenham members to represent England at senior level. Gavin played in the German, Finland and Luxembourg Opens while Bradley played also in the latter but not in the team event. Gavin also played in several international junior and cadet events and for the England team that finished eighth in the World Junior Championships. One of the highlights of the year, away from the table, for Gavin was winning the East Midlands BBC Junior Sportsman of the Year award.

Cippenham had three members selected for England to play in the European Youth Championships last summer. Gavin Evans and Matt Ware made the trip by Melanie Farquhar had to withdraw. Mel did, however, represent her country at other events in Poland and for Team GB at the Australian Youth Olympics.

Bradley Evans and Sarra Wang were the Cippenham representatives in the England teams at the Six Nation Junior and Cadet Championships.

In the summer of 2006 David Hayes signed off from his junior days with the honour of being named Irish Junior Player of the Year.



Two Cippenham members, Gavin Evans (England) and David Hayes (Ireland) spent the last week of May in Zagreb representing their countries at the World Championships.

A total of 30 members have appeared high enough on England ranking lists during the past season to warrant inclusion on the ETTA website and 19 of these are products of the Club's coaching scheme. Sarra Wang (junior girls), Gavin Evans (cadet boys) and Edward Mitchell (under-13 boys) have been number one while others that have appeared in the top ten are Gavin Evans (senior men and junior boys), Abigail Embling and Lesley Keast (both senior women), Bradley Evans (junior boys), Melanie Farquhar and Reena Ardesana (both junior girls), Jonathan Evans (under-13 boys) and Eddie Smith (veteran men).

Congratulations and thanks are given to all the organisers, coaches, helpers, players and teams that have made the past season yet another successful one for Cippenham Table Tennis Club.

Graham Trimming
Chairman & General Secretary
May 2007